



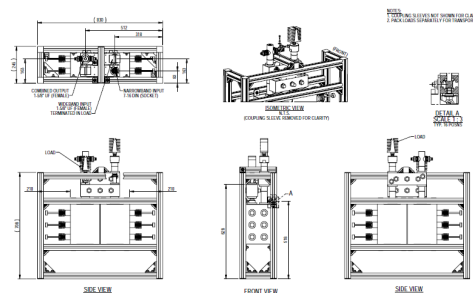
The CA6PPXX80E combiner is designed for DTV mask and combining applications. A module comprises a pair of 6 pole 80mm UHF filters and a pair of 3 dB couplers in a balanced combiner configuration.

**FEATURES / BENEFITS**

Each combiner module features

- Compact size
- Low insertion loss
- Adjacent channel operation
- DTV mask filtering
- Double compensated invar temperature stability

Detailed electrical specifications and further information is available by opening the appropriate external document link below.



Typical CA6PPXX80E Combiner

**Technical features**

**STRUCTURE**

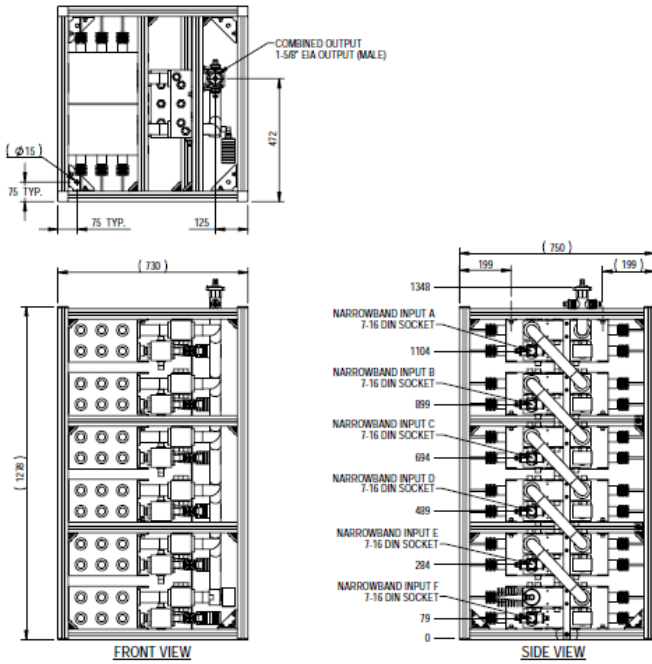
Product Line		Combiner TV
Product Type		Band IV/V (UHF) TV Balanced Combiner
Filter Type and Size		Cross coupled

**ELECTRICAL SPECIFICATIONS**

Frequency Range	MHz	470 - 862
Minimum Channel Spacing		adjacent
Narrowband Input Power	kW	1
Number of Poles		6
Number of Cross Couplings		2
Channel Bandwidth	MHz	6 to 8
Mask		ATSC 3 FCC, ISDB-T Critical, ETSI 8MHz Non-critical

**TEMPERATURE SPECIFICATIONS**

Maximum Operating Temperature	°C (°F)	80 (176)
Ambient Temperature Range	°C (°F)	-5 to 55 (23 to 131)
Maximum Temperature Rise	°C (°F)	40 (104)
Freq Drift - Tx Operation	kHz/°C(°F)	<2 (1.2)
Freq Drift - Ambient Temperature	kHz/°C(°F)	<2 (1.2)



6 channel frame mounted combiner

External Document Links

[Combiner Application Guide ETSI DVB-T and T2 8MHz](#)

[Combiner Application Guide \(ATSC 6MHz\)](#)

[Combiner Application Guide \(ISDB-T 6MHz\)](#)

Notes

Detailed electrical specifications and further information is available by opening the appropriate external document links.