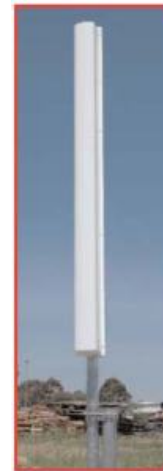




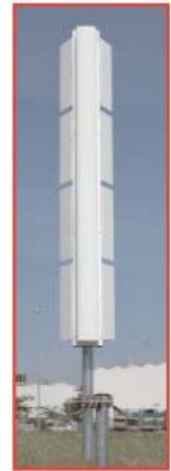
A new slim and light weight circularly polarised UHF antenna has been developed to provide excellent performance in a compact configuration. Low weight and low wind load construction make this antenna an ideal choice for applications, such as repeater stations for Mobile Media, where an economical and very flexible antenna solution is required.

**FEATURES / BENEFITS**

- Circularly polarised
- Ideally suited for low power infills or Mobile TV applications
- Low drag profile underpins the antenna's high wind speed rating and low wind load characteristics
- Cost-effective
- High input power
- For detailed technical information use the external document link below.



CPR4SK



CPR4A

**Technical features**

**STRUCTURE**

|              |  |                                  |
|--------------|--|----------------------------------|
| Product Line |  | Antenna TV                       |
| Product Type |  | Band IV/V (UHF) TV Slot Antennas |

**ELECTRICAL SPECIFICATIONS**

|                                |          |               |
|--------------------------------|----------|---------------|
| Frequency Range                | MHz      | 716 - 728     |
| Polarization                   |          | Circular      |
| Gain per Plane of Polarization | dBd      | 7.1           |
| Return Loss                    | dB       | > 26.4        |
| Power Rating                   | kW       | 1.7 @ 722 MHz |
| Impedance (unbalanced)         | $\Omega$ | 50            |

**MECHANICAL SPECIFICATIONS**

|                     |            |                           |
|---------------------|------------|---------------------------|
| Input Connector     |            | 7-16 DIN Female at centre |
| Mounting (Standard) | mm (in)    | Pole OD 60/24             |
| Design Wind Speed   | km/h (mph) | 180 (112)                 |
| Weight              | kg (lb)    | 25                        |
|                     |            | 55                        |

**PACKAGING INFORMATION**

|                          |         |        |
|--------------------------|---------|--------|
| Shipping Weight, Kg (lb) | kg (lb) | 25 ( ) |
|--------------------------|---------|--------|

**MATERIAL**

|                                    |  |                             |
|------------------------------------|--|-----------------------------|
| Material                           |  | Radiating element aluminium |
| Material - Radome                  |  | UV Resistant Fibre Glass    |
| Material - Insulators              |  | Radiating element aluminium |
| Material - Support Pole / Mounting |  | Radiating element aluminium |
| Material - Radiators               |  | Radiating element aluminium |
| Material - Reflecting Screen       |  | Radiating element aluminium |

External Document Links  
[CPR Antenna series-03.pdf](#)

Notes