



B320-300FP

Connector for FLEXWELL® elliptical waveguide E300, PBR320 Flange

Standard connector for FLEXWELL® elliptical waveguide E300 with PBR320 flange, gasket with shrinking sleeve sealed
frequency range: 27.5 - 33.4 GHz

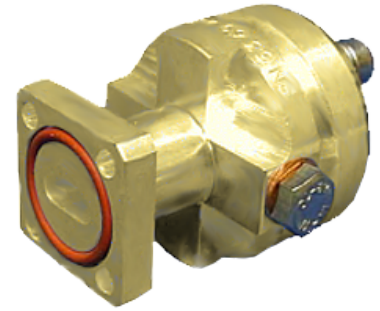
FEATURES / BENEFITS

Superior Design

- Due to the precise manufacturing no tuning screws are necessary
- The terminations are brass passivated for good electrical performance
- A gas inlet is included

Quick & Easy Installation

- Different flaring tools are available
- No tuning in the field



Technical features

STRUCTURE

Transmission Line Type		Elliptical Waveguide
Cable Type		E300
Model Series		E300 Series
Connector Frequency Range	GHz	27.5 - 33.4
Connector Type		Fixed
Sealing Method		Gasket with Shrinking Sleeve
Plating Outer/Inner		Brass
Waterproof Level		IP68
Gas Inlet		M5 x 0.8
Connector Interface		PBR320

MECHANICAL SPECIFICATIONS

Length	mm (in)	44 (1.7)
Outer Diameter	mm (in)	32 (1.3)
Weight	kg (lb)	0.2 (0.44)

External Document Links

- [Installation Instruction](#)
- [Application Note](#)

Notes