



Standard connector for FLEXWELL® elliptical waveguide E150 with PDR120 flange, Plast 2000 sealed frequency range: 13.4 - 14.5 GHz

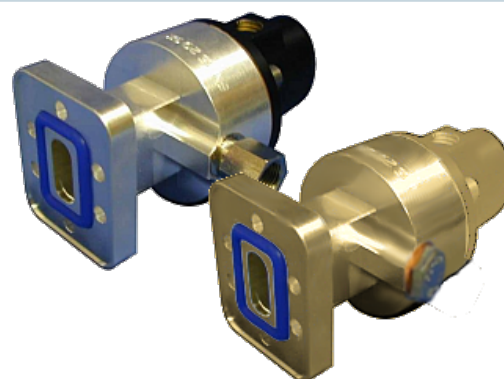
**FEATURES / BENEFITS**

**Superior Design**

- Due to the precise manufacturing no tuning screws are necessary
- The terminations are brass passivated for good electrical performance
- A gas inlet is included

**Quick & Easy Installation**

- Different flaring tools are available
- No tuning in the field



**Technical features**

**STRUCTURE**

<b>Transmission Line Type</b>		Elliptical Waveguide
<b>Cable Type</b>		E150
<b>Model Series</b>		E150 Series
<b>Connector Frequency Range</b>	GHz	13.4 - 14.5
<b>Connector Type</b>		Fixed
<b>Sealing Method</b>		Plast 2000
<b>Plating Outer/Inner</b>		Brass
<b>Waterproof Level</b>		IP68
<b>Gas Inlet</b>		G 1/8
<b>Connector Interface</b>		PDR120

**MECHANICAL SPECIFICATIONS**

<b>Length</b>	mm (in)	85 (3.4)
<b>Outer Diameter</b>	mm (in)	45 (1.8)
<b>Weight</b>	kg (lb)	0.4 (0.88)
<b>Sealing Volume</b>	cm <sup>3</sup> (ounces)	20 ( 0.68)

**External Document Links**

[Installation Instruction](#)

**Notes**

Sealing component PLAST 2000 is **not** part of the connector delivery and must be ordered separately.