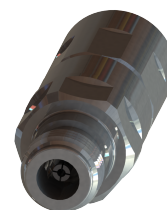




NF-LCF12-E01

N Female Connector for 1/2" Coaxial Cable, OMNI FIT™ Premium, Straight, O-Ring and 360° sealing rubber



OMNI FIT™ high performance connectors are designed for use with both CELLFLEX® (copper) and CELLFLEX® Lite (aluminium) cables. They are designed specifically to provide the highest quality connector-cable interface while simplifying and speeding up connector attachment. All RFS connectors are fully tested for mechanical and electrical compliance to industry specifications.

The N connector meets all technical requirements and covers high frequencies as well as legacy applications. Sealing against outer conductor and jacket by means of o-ring and 360° compression fit.

FEATURES / BENEFITS

- Ultra high PIM performance i.e. reduced interference leading to high customer satisfaction
- Two-piece design i.e. visual inspection of interlocking leads to improved installation security
- OMNI FIT™ concept i.e. streamlined order management and reduced stock level
- Watertight sealing in mated and unmated condition, i.e. reduced efforts during installation and improved security during operation
- Tri metal alloy plating i.e. extreme resistance against corrosion even under hardest climatic and environmental circumstances
- Multi-thread (Tristart) design i.e. simplified and accelerated tightening process
- RoHS (EU) and CRoHS (China) compliant i.e. can be used on a global basis

Technical features

GENERAL SPECIFICATIONS

Transmission Line Type		Coaxial Cable
Cable Size		1/2
Cable Type		Foam Dielectric
Model Series		LCF12-50 Series
Connector Interface		N
Connector Type		OMNI FIT™ PREMIUM Straight
Sealing Method		sealing rubber
Gender		Female

ELECTRICAL SPECIFICATIONS

Nominal Impedance, ohms	Ohm	50
3rd Order IM Product @ 2x20 Watts	dBc	-158 ; typical -162
Maximum Frequency	GHz	6.0
VSWR, Return Loss	VSWR (dB)	0 $f \le 1.0 \text{ GHz}$: 1.02 (40) 1.0 $f \le 2.2 \text{ GHz}$: 1.03 (37) 2.2 $f \le 2.7 \text{ GHz}$: 1.03 (36) 2.7 $f \le 3.8 \text{ GHz}$: 1.07 (30) 3.8 $f \le 5.0 \text{ GHz}$: 1.11 (26) 5.0 $f \le 6.0 \text{ GHz}$: 1.15 (23)

MECHANICAL SPECIFICATIONS

Plating Outer/Inner		Tri metal alloy / Silver
Length	mm (in)	64 (3)
Outer Diameter	mm (in)	24 (1)
Inner Contact Attachment		Spring Finger
Outer Contact Attachment		360° clamping



NF-LCF12-E01

N Female Connector for 1/2" Coaxial Cable, OMNI FIT™ Premium, Straight, O-Ring and 360° sealing rubber

ACCESSORIES

Wrench size front	mm (in)	22
Wrench size rear	mm (in)	22
Trimming Tool		TRIM-LCF12-D01-A

TESTING AND ENVIRONMENTAL

Waterproof Level		IP68
-------------------------	--	------

[External Document Links](#)
[Installation Instruction](#)

[Notes](#)